

Swallowtail News



With friendship, trust and kindness, we fly!

office@catfield.norfolk.sch.uk (01692 580568) office@hickling.norfolk.sch.uk (01692 598355) office@sutton.norfolk.sch.uk (01692 580608)

December 2025 Newsletter

Message from the Executive Head

Dear families,

Welcome to our December newsletter.

I am really looking forward to the coming days in schools where I will view the nativities and KS2 carol concert. Thank you to the staff who have been working incredibly hard to help our children shine. I look forward to seeing many of you at our events.

The end of a year, is always a time to reflect and think about what we are grateful for. I can honestly say I am truly grateful that I get to work in these three amazing schools. I could not be prouder of the pupils and staff who continue to flourish. Thank you for always finding time in your busy life's to support us and share a kind word. It really does make all the difference.

Wishing you all a Merry Christmas.

*Kind Regards,
Natalie Butcher
Executive Head, The Swallowtail Federation*

Message from Miss Blake

Dear families,

I am humbled by the children's efforts and dedication throughout their rehearsals and performances of the nativity. The children shone brightly and really blossomed within their roles over the last 6 weeks. A huge thank you to family, friends and the village community for coming and supporting the children over the last couple of days, a special thank you for your participation with our final song.

Enjoy a lovely weekend,

Miss Blake

This month's curriculum focus - Music and Modern Foreign Languages

Music

Our Music program aims to provide our children the opportunity to learn to play a variety of interesting instruments; celebrate individual performance and composition; as well as inspire and culturally unite them with a generous range of genres of excellent music throughout history. Sequencing and progression is catered to the ages of our pupils. We explore music through the inter-related dimensions of music: performing, listening, composing, and learning about the history of music.

On their musical journey at Swallowtail this year, children in Key Stage 1 will be using percussion and African djembes and a range of percussions as their untuned instruments; using their voices expressively through singing in class; learning to play glockenspiels as their tuned instrument; and exploring high-quality music from the 1930s, 40s and 50s. The children in Key Stage 2 will be advancing their skills with these instruments, particularly during their glockenspiel unit. They will sing before an audience in ensemble context. Finally, the Cheetahs will be listening to Contemporary musicians (1960-present) in their Music History unit, and the Panthers will focus on the Romantic Music era (1820-1900). This year, the KS2 children at Catfield are looking forward to attending the Young Voices choir at the O2 in London in February!

Music work is recorded in samples by the teacher and kept in a digital file by the Music Subject Leader. Once a year, when the children study Music History and Theory, their recorded work is kept in a treasury tagged folder, that will be passed up through their years at school.

If children have musical experience outside of school, we would love for them to share this with us during their music lessons or during our second annual Arts Festival in the Summer term so that we can celebrate their learning and developing talents! Please speak with the teacher that delivers their music lessons for assistance with keeping a personal instrument safely stored at school, should you wish to send it in. Alternatively, you could record them playing their instrument at home for us to share at school.

Modern Foreign Languages (KS2 only)

Our Modern Foreign Languages (MFL) curriculum is personally crafted and delivered by our MFL Subject Leader. It follows the National Curriculum for Languages in Key Stage 2 with a view to provide engaging, varied and stimulating units of study over the course of their four years of learning at Swallowtail. The chosen language of study at Swallowtail is Spanish.

It is a passionate priority of the MFL leader that children enjoy learning about a range of practical topics in Spanish, such that they can begin to converse about ideas that are most likely to present themselves in day-to-day life, are important and appropriate to their age group. In each topic, we will undertake skills required to listen, speak, read and write. Woven through their years of learning, are Hispanic cultural units to enrich their understanding of the world and its citizens.

Spanish learning is recorded in their Spanish books, which the children take home at the end of each academic year. Spoken evidence may be recorded in samples and kept in a digital Subject Leader file. Children will also have the opportunity to take home small projects that they make in class at various points each year, be it an adapted story that they have written, a themed bilingual card or a hand-made vocabulary learning tool!

We have an ambitious curriculum in Key Stage 2 at Catfield, therefore, during Autumn 1, the children have been reviewing their Spanish skills (or in the case of Year 3, immersing) independently whilst awaiting their swimming lessons to make the most of every minute! These tasks have been set and marked by the Spanish teacher, and will be taken up in due course.

This year, we will be studying: food, the body, asking for medical help, and Hispanic cultural similarities and differences around Valentine's Day. Our grammatical learning will link to our units of study wherever possible. Likewise, our writing pieces this year will link to our book studies on food, injuries, as well as writing cards for Mother's and Father's Day.

If you find that your child(ren) are particularly interested in learning Spanish or any second language for that matter, our MFL leader highly recommends the free App: Duolingo, as an engaging, motivating way of learning through digital play!

Mrs. Pell

News:

IMPORTANT REMINDER

Whilst you will already be aware that we are a nut free school, I wish to stress the importance of nut and nut products not coming into school. A member of our school community is anaphylaxis therefore we must ensure high vigilance at all times. Thank you for ensuring we keep everyone safe in school.

We will be holding a Christmas Raffle this year. Tickets can be purchased throughout the month of December. The raffle will be drawn on Wednesday 17th December. Raffle tickets will be £1 per ticket, please purchase your raffle tickets from the school office.

Respiratory and flu-like cases are rapidly on the rise. We urge you to ensure your child receives the flu vaccination. **You have a choice between the quick and painless nasal spray or the Injection which is porcine & gelatine free.** This not only protects your children against being seriously but also protects vulnerable members of your family and community.

We have several community catch-up clinics available. Please use the link <https://eastanglia.schoolvaccination.uk/flu/2025/book> to book an appointment.

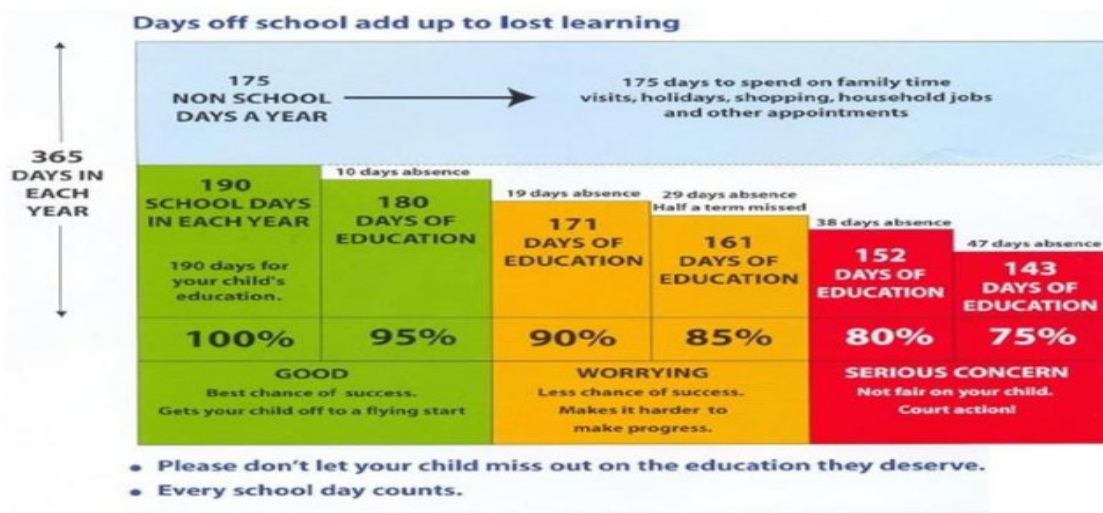
If you previously declined consent for your child when we visited the school, you **CAN CHANGE** your consent. Please call our office on 01603 576320, and we will book a clinic appointment for you.

Kind Regards,

Norfolk Immunisation Team

Tel: 01603 576320 | Norfolk Team: norfolk@v-uk.co.uk

Attendance Year-to-Date for Harriers: 95.80%



Diary Dates

- **Monday 15th December** – Christmas Church Service at St Mary's Church – 2pm - Families welcome. Children to go home after the service.
- **Tuesday 16th December** - Singing to the lunching group at Hickling Chapel
- **Wednesday 17th December** – Carol Singing in the village (AM)
- **Wednesday 17th December** - Christmas Raffle drawn
- **Friday 19th December** - Christmas Lunch
- **CHRISTMAS HOLIDAY – 22nd December – 5th January**
- **Tuesday 6th January** - Spring term begins

NEXT WEEK

Monday

Christmas Church Service - 2pm at St Mary's Hickling. Children are welcome to go home after the service, alternatively we will walk them back to school for collection at 3.20pm or later if accessing wrap around provision.

Tuesday

Singing at the chapel - 1.15pm - Children only.

Wednesday

Carol singing around the village. Please see schedule below.

9.30am - The Village Green

10am - The Chapel car park

10.50am - Broadlands Road

11.20am - The Community Garden

PE

Thursday

Forest School

Friday

Christmas lunch

Christmas Party - Children are invited to come into school in their party clothes. Please bring a plate of party food to share. A polite reminder that we are a nut free school therefore please ensure food donations do not contain traces of peanuts. If you are unsure please speak to Miss Blake

Safeguarding

Some links for e-safety:

<http://www.thinkuknow.co.uk/>

<https://www.childrenscommissioner.gov.uk/digital/5-a-day/>

<https://www.nspcc.org.uk/keeping-children-safe/online->

Stay up to date...

Website: <http://www.swallowtailfederation.co.uk/>

Follow us on Facebook at **Hickling Infant Academy**